

A great and cheap solution to enlighten small and medium size pieces with a robust and stable direct LED light.

With his low weight and small size, provides a great amount of light, in addition to a low consumption hence has a low heat dissipation.

Also, it has a small aperture light that can be used to enlighten distant objects or highlight surface reliefs.



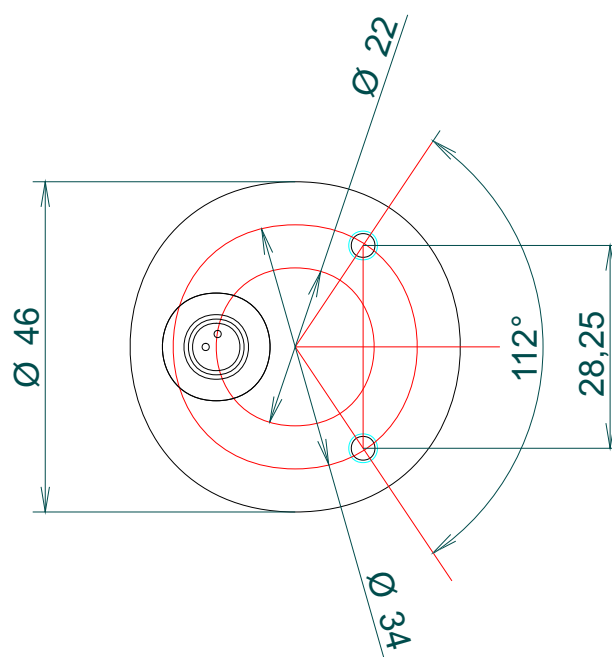
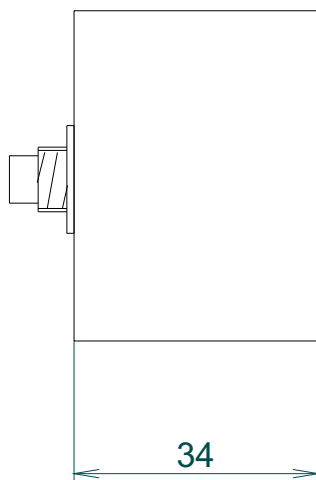
LIGHTING TECHNIQUE

Lighting mode: Direct
Light source: 18 high intensity LEDs
Colour (nm): See table 1
LED life: 100.000 hours

ELECTRICAL

Max. power supply: 24VDC (Continuous models)
Max. consumption: 60mA Red and Yellow
 90mA Other colour
Wire include: 1,80m
 Brown -> 24VDC
 Blue -> 0V (GND)

EXTERNAL PLANE



MECHANICAL

LxWxH: See external plane
Mounting: 2 M4 steel stress
Housing material: Black anodized aluminium
Weight: 100 grs.

ENVIRONMENTAL

Max. Operating Humidity: 95% non-condensing
Operating temp: 0..40°C
Storage temp: 0..60°C

MODELS

Table 1.

Ligth colour	Wavelength	Type	Reference
Red	660nm	Continuous	IL036AA
Red	660nm	Strobe	IL036AS
Near infrared	880nm	Continuous	IL036AN
Near infrared	880nm	Strobe	IL036AM
Infrared	940nm	Continuous	IL036AI
Infrared	940nm	Strobe	IL036AJ
White	-----	Continuous	IL036AB
White	-----	Strobe	IL036AC
UV	400nm	Continuous	IL036AU
UV	400nm	Strobe	IL036AW
Others	-----	????	Consult

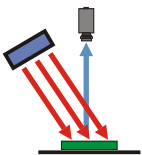
COMPLEMENTS

Table 2.

Complement	Type	Reference
Wire 1.8 m	Wire	IL000AA
Wire 2.5 m	Wire	IL000AB
Wire 4.0 m	Wire	IL000AC
Strobe controller with 3 outputs	Strobe	IL004BB

LIGHTING MODES

DOWN LIGHT PUNCTUAL LIGHTING (HARD)



The light produced by the leds array reaches directly the object. It produces a great contrast and emphasizes the textures, reliefs and fissures of the lighted object. Because any relief, even a small one, produces a very defined shadow.

The incidence light angle regarding the lighting plane will determine the degree of the relief's projection.

For very small angles regarding the horizontal, the light will produce shadows in the reliefs of the piece.

For angles near 90° with regard to the horizontal, the shadow will be visible just in great reliefs.

Its use is ideal for the detection of pieces and objects and its correct placement, in the detection of edges, scratches or fissures in a certain direction.