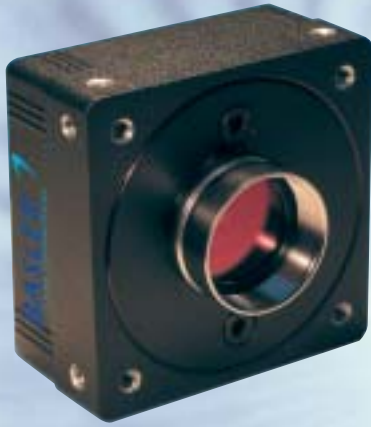


# SPECIFICATIONS

## PRODUCT SPECIFICATIONS



**DIGITAL CCD AREA SCAN  
COLOR AND MONOCHROME  
IEEE1394 OUTPUT  
UP TO 73 FPS AT VGA RESOLUTION  
UP TO 53 FPS AT CCIR RESOLUTION**

## BASLER A310 SERIES

### Features/Benefits

- Superior image quality improves your image processing results
- Super compact size reduces the space needed in your installation
- 100% factory testing ensures consistent product quality
- Area of Interest (AOI) scanning allows higher frame rates
- Choice of resolutions maximizes your system design flexibility
- Electronic exposure time control provides maximum flexibility

### Description

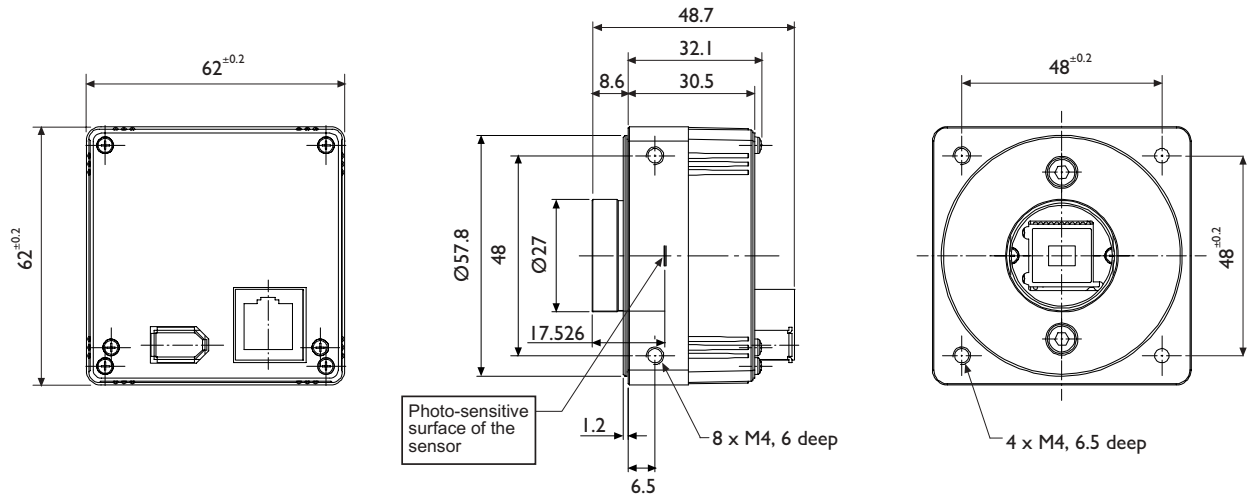
The A310 Series of high-performance, digital cameras is ideal for a variety of industrial applications. The cameras can be triggered via an external sync signal or run in an internally controlled "free-run" mode. A310 cameras operate with a single voltage power supply and have the advantage of remarkably simple cabling requirements. A combination of features such as digital shift, and test images, ensure that these versatile cameras provide an exceptional price/performance ratio.

### Applications

- Semiconductor and component inspection
- Manufacturing quality control
- Food and beverage inspection
- Microscopy and medical imaging
- Biometrics
- Many other vision applications

**BASLER**  
VISION TECHNOLOGIES

## Dimensions (in mm)



Specifications	A311f	A311fc	A312f	A312fc
Sensor Size (H x V Pixels)	659 x 494	658 x 492	782 x 582	780 x 580
Sensor Type	Progressive CCD			
Pixel Size (in $\mu\text{m}$ )	9.9 x 9.9	9.9 x 9.9	8.3 x 8.3	8.3 x 8.3
Max. Frame Rate at Full Resolution	73 fps	73 fps	53 fps	53 fps
Color / Mono	Mono	Color	Mono	Color
Video Output Format	Mono8, Mono16 (12bpp)	Mono8, Mono16 (12bpp), Raw8, Raw16 (12bpp), YUV422	Mono8, Mono16 (12bpp)	Mono8, Mono16 (12bpp), Raw8, Raw16 (12bpp), YUV422
Synchronization	Via external trigger or the 1394 bus			
Exposure Control	Programmable via 1394 bus			
Power Requirements	+8 to +36 VDC (12 VDC nominal), max. 3.0 W			
Lens Mounts	C-mount			
IR-Cut Filter	Optional	Standard	Optional	Standard
Housing Size (L x W x H)	40.8 mm x 62 mm x 62 mm			
Weight	Ca. 240 g			
Conformity	CE, FCC			

Specifications are subject to change without prior notice.

**BASLER**  
VISION TECHNOLOGIES

**Germany, Headquarters**  
Phone +49 4102 463 500  
Fax +49 4102 463 599  
vc.sales.europe@baslerweb.com

**USA**  
Phone +1 610 280 0171  
Fax +1 610 280 7608  
vc.sales.usa@baslerweb.com

**Singapore**  
Phone +65 6425 0472  
Fax +65 6425 0473  
vc.sales.asia@baslerweb.com

[www.basler-vc.com](http://www.basler-vc.com)